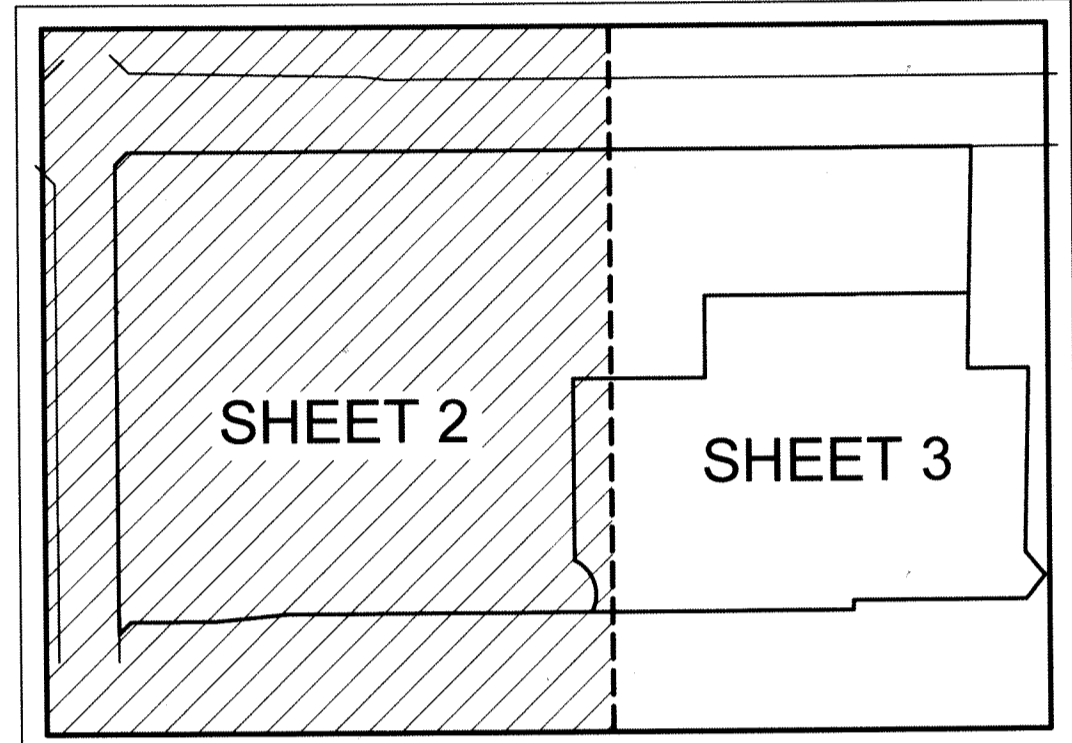
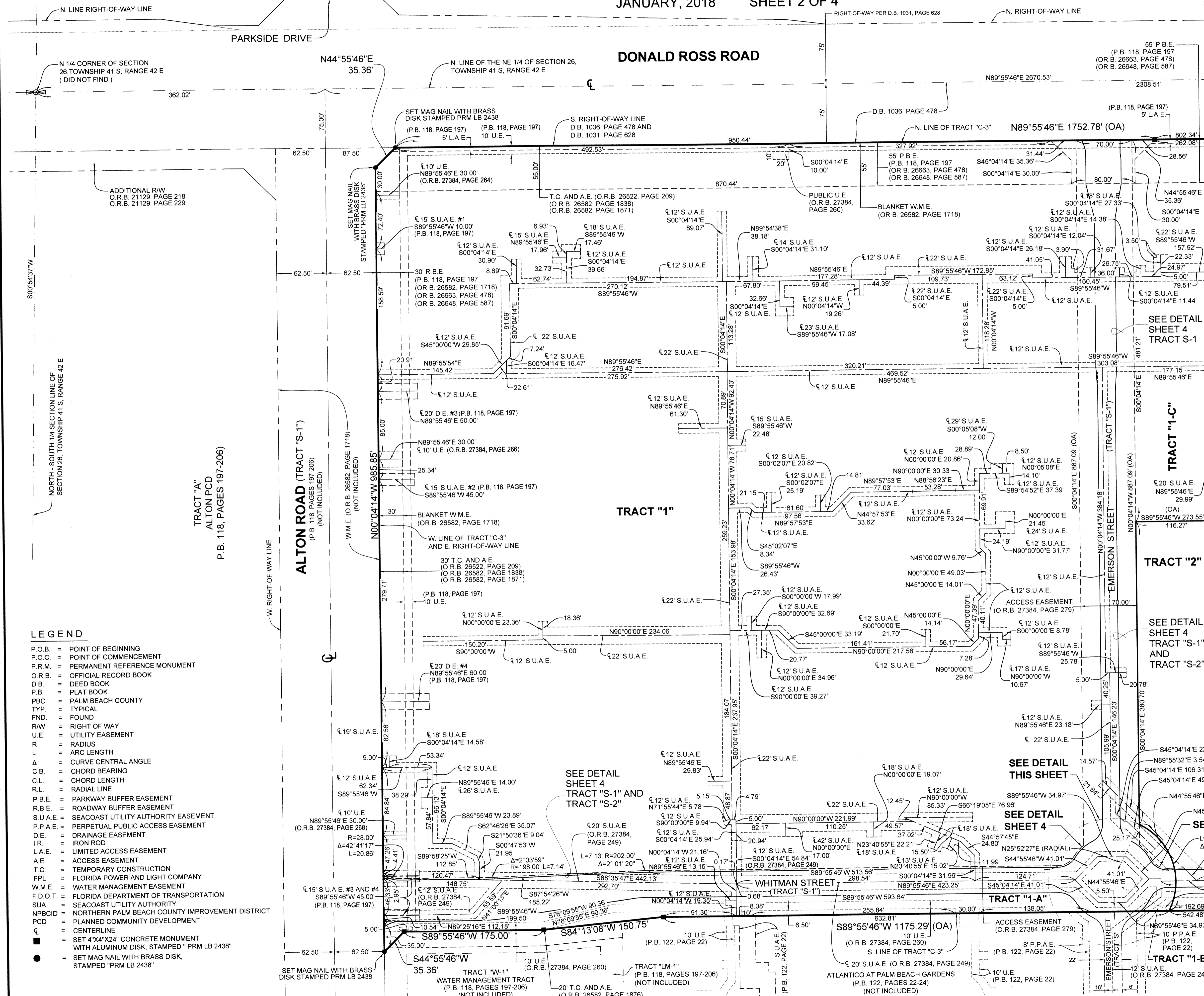


ALTON TOWN CENTER

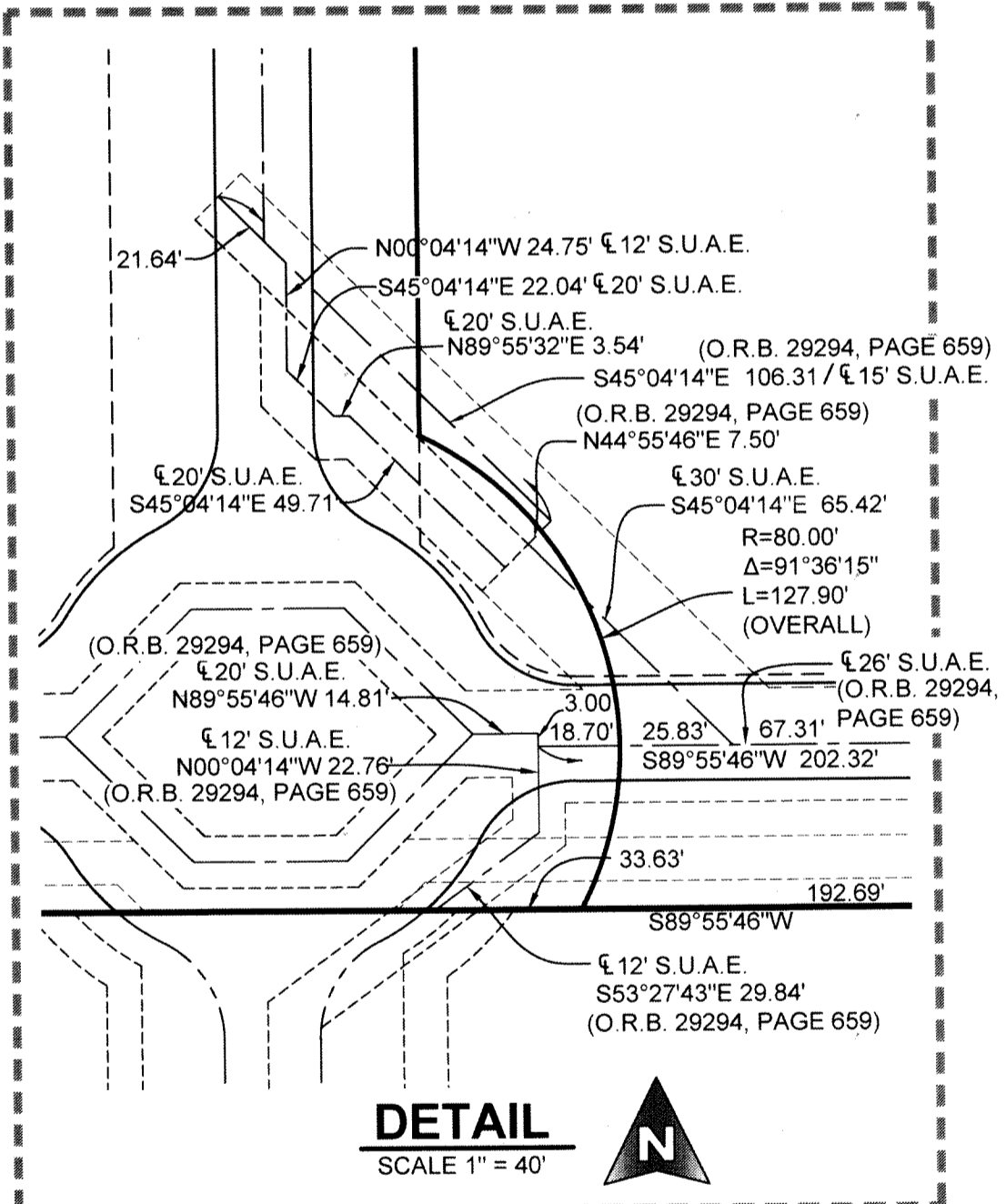
BEING A RE-PLAT OF TRACT "C-3", ALTON PCD, AS RECORDED IN PLAT BOOK 118, PAGES 197 THROUGH 206, INCLUSIVE, PUBLIC RECORDS OF PALM BEACH COUNTY, FLORIDA, LYING IN THE NORTHEAST QUARTER OF SECTIONS 26, TOWNSHIP 41 SOUTH, RANGE 42 EAST, CITY OF PALM BEACH GARDENS, PALM BEACH COUNTY, FLORIDA.
 JANUARY, 2018 SHEET 2 OF 4

164

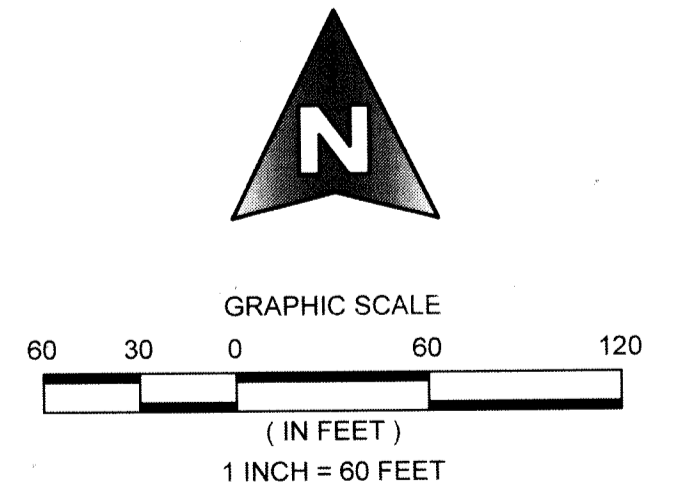
COUNTY OF PALM BEACH)
 STATE OF FLORIDA) SS
 THIS PLAT WAS FILED FOR RECORD AT _____ M. THIS _____ DAY OF _____ 2018, AND DULY RECORDED IN PLAT BOOK NO. _____ ON PAGE _____ THRU _____
 SHARON R. BOCK, CLERK AND COMPTROLLER
 BY: _____, D.C.



KEY MAP
 NOT TO SCALE



DETAIL
 SCALE 1" = 40'



GRAPHIC SCALE
 0 30 60 90 120
 (IN FEET)
 1 INCH = 60 FEET

- LEGEND**
- P.O.B. = POINT OF BEGINNING
 - P.O.C. = POINT OF COMMENCEMENT
 - P.R.M. = PERMANENT REFERENCE MONUMENT
 - O.R.B. = OFFICIAL RECORD BOOK
 - D.B. = DEED BOOK
 - P.B. = PLAT BOOK
 - PBC = PALM BEACH COUNTY
 - TYP. = TYPICAL
 - FND. = FOUND
 - R/W. = RIGHT OF WAY
 - U.E. = UTILITY EASEMENT
 - R. = RADIUS
 - L. = ARC LENGTH
 - Δ = CURVE CENTRAL ANGLE
 - C.B. = CHORD BEARING
 - C.L. = CHORD LENGTH
 - R.L. = RADIAL LINE
 - P.B.E. = PARKWAY BUFFER EASEMENT
 - R.B.E. = ROADWAY BUFFER EASEMENT
 - S.U.A.E. = SEACOAST UTILITY AUTHORITY EASEMENT
 - P.P.A.E. = PERPETUAL PUBLIC ACCESS EASEMENT
 - D.E. = DRAINAGE EASEMENT
 - I.R. = IRON ROD
 - L.A.E. = LIMITED ACCESS EASEMENT
 - A.E. = ACCESS EASEMENT
 - T.C. = TEMPORARY CONSTRUCTION
 - FPL = FLORIDA POWER AND LIGHT COMPANY
 - W.M.E. = WATER MANAGEMENT EASEMENT
 - F.D.O.T. = FLORIDA DEPARTMENT OF TRANSPORTATION
 - SUA = SEACOAST UTILITY AUTHORITY
 - NPBCID = NORTHERN PALM BEACH COUNTY IMPROVEMENT DISTRICT
 - PCD = PLANNED COMMUNITY DEVELOPMENT
 - CL = CENTERLINE
 - = SET 4"x4"x24" CONCRETE MONUMENT WITH ALUMINUM DISK, STAMPED "PRM LB 2438"
 - = SET MAG NAIL WITH BRASS DISK, STAMPED "PRM LB 2438"

MICHAEL B. SCHORAH & ASSOCIATES, INC.
 1850 FOREST HILL BLVD., SUITE 206
 WEST PALM BEACH, FLORIDA 33406
 EB# 2438 TEL. (561) 968-0080 FAX. (561) 642-9726 LB# 2438

ALTON TOWN CENTER